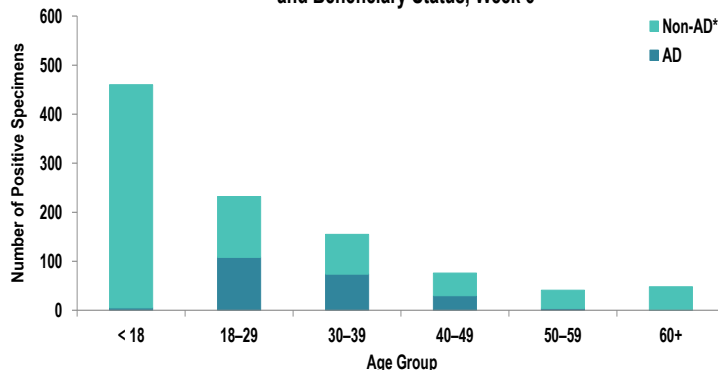


SUMMARY

Influenza activity has remained constant in the Army population—10.6% of specimens tested positive for influenza A in Week 6 compared to 10.3% in Week 5. Influenza B percent positivity decreased slightly from Week 5 to Week 6, and RSV activity in the Army population increased slightly. Three influenza-associated hospitalizations were reported during surveillance Week 6. Nationwide, influenza activity remains elevated, with 14.8% of specimens tested by clinical laboratories being positive for influenza A or B, according to the Centers for Disease Control and Prevention (CDC). As a reminder, seasonal influenza spreads rapidly and easily. Getting vaccinated is the best way to prevent exposure and further spread of influenza.

DEMOGRAPHICS

Positive Respiratory Specimen Results from Army MTFs by Age Group and Beneficiary Status, Week 6



AD: Two hundred and twenty-two positive respiratory specimens were collected from active duty (AD) service members (SMs) during Week 6; 48.6% (n=108) of the positive specimens were collected from SMs 18 – 29 years of age.

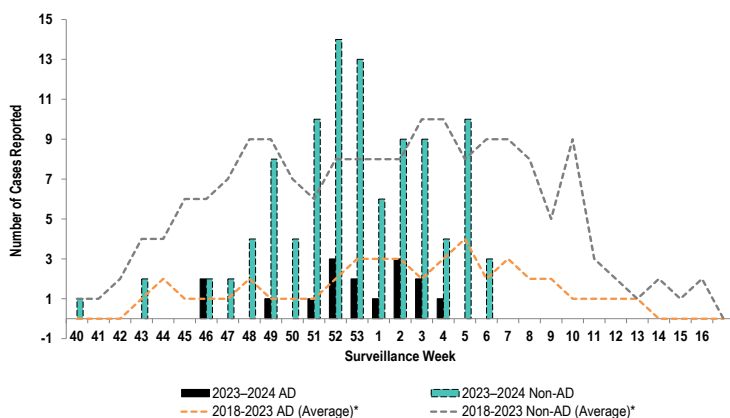
Non-AD: Seven hundred and ninety positive respiratory specimens were collected from non-AD individuals during Week 6; 57.6% (n=455) of the positive specimens were collected from individuals under 18 years of age and 15.7% (n=124) from individuals who are 18 – 29 years old.

*Non-AD=All individuals that are not active duty service members.

The age and beneficiary status of some cases were not available. Therefore, all calculations involving these variables were conducted using only available data. Differences in total results, and age- and beneficiary status-specific results may be noted throughout the report.

INFLUENZA-ASSOCIATED HOSPITALIZATIONS

Army Influenza-Associated Hospitalizations Reported in DRSi by Onset Week



Three influenza-associated hospitalizations with an onset date in Week 6 were reported to the Disease Reporting System internet (DRSi). The season total thus far is 117 hospitalizations. The Week 6 average during the 2018 – 2023 seasons was 10 hospitalizations (with an average of 149 hospitalizations reported from the start of the season through Week 6).

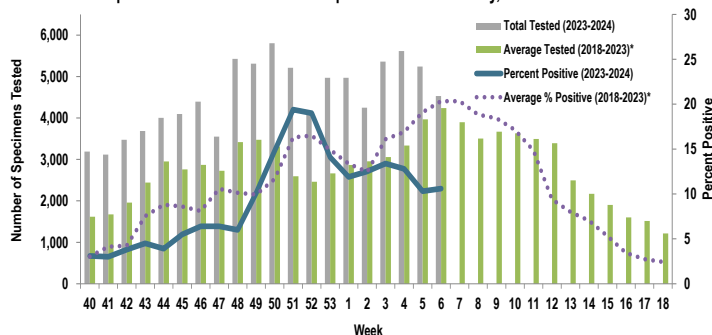
The DRSi does not capture cases older than 65 years old for influenza-associated hospitalizations.

*Data from the 2020–2021 and 2021–2022 influenza seasons are not included in comparison calculations due to the unusually low incidence of influenza.

INFLUENZA A ACTIVITY - ARMY

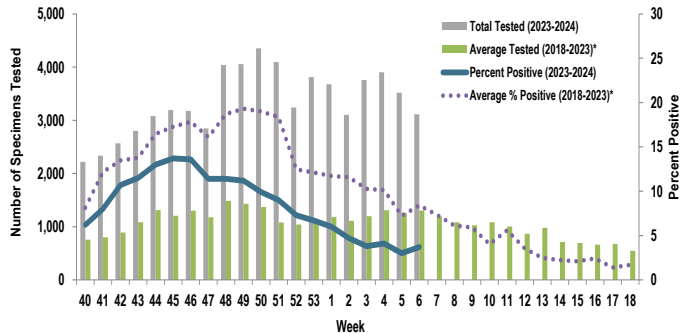
RSV ACTIVITY - ARMY

Proportion of Positive Influenza A Specimens for U.S. Army, 2023-2024



Of the 4,529 specimens tested for influenza A during Week 6, 10.6% (n=479) were positive. There was little change since Week 5 (10.3%).

Proportion of Positive RSV Specimens for U.S. Army, 2023-2024



Of the 3,114 specimens tested for RSV during Week 6, 3.7% (n=115) were positive.

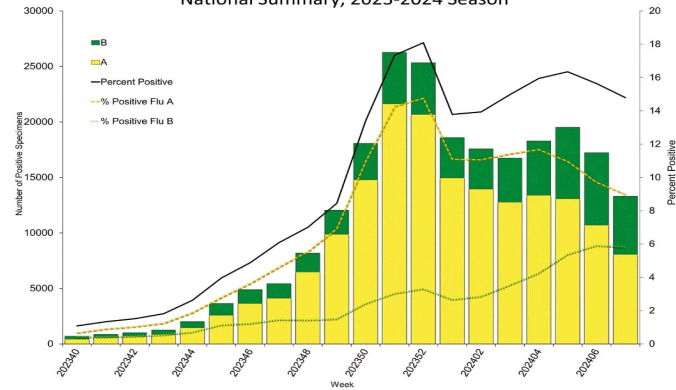
*Data from the 2020–2021 and 2021–2022 influenza seasons are not included in comparison calculations due to the unusually low incidence of influenza.

| | Week 3 | Week 4 | Week 5 | Week 6 | Season Total | |
|--------------------------------------|---------------|--------------|--------------|--------------|--------------|---------------|
| Army MTF Laboratory Results, 2023-24 | Adenovirus | 11 | 8 | 13 | 16 | 251 |
| | Enterovirus | 31 | 40 | 53 | 55 | 911 |
| | Influenza A | 720 | 716 | 541 | 479 | 9,177 |
| | Influenza B | 285 | 421 | 349 | 326 | 3,471 |
| | Parainfluenza | 9 | 14 | 6 | 21 | 232 |
| | RSV | 141 | 159 | 106 | 115 | 5,605 |
| | Negative | 4,216 | 4,314 | 4,246 | 3,588 | 71,873 |
| | Total | 5,413 | 5,672 | 5,314 | 4,600 | 91,520 |

Of the 4,600 specimens tested during Week 6, 22.0% (n=1,012) were positive for any type of respiratory illness. Influenza A accounted for 47.3% (n=479) of the positive results, influenza B accounted for 32.2% (n=326), RSV accounted for 11.4% (n=115), enterovirus accounted for 5.4% (n=55), parainfluenza accounted for 2.1% (n=21) and adenovirus accounted for 1.6% (n=16). Additionally, the reported number of specimens tested decreased 13.4% from Week 5 to Week 6. Significantly more tests for influenza have been conducted this season compared to past seasons; 90,334 specimens have been tested for influenza A so far this season compared to the average of 57,340 specimens during the same time period in 2018-2023*.

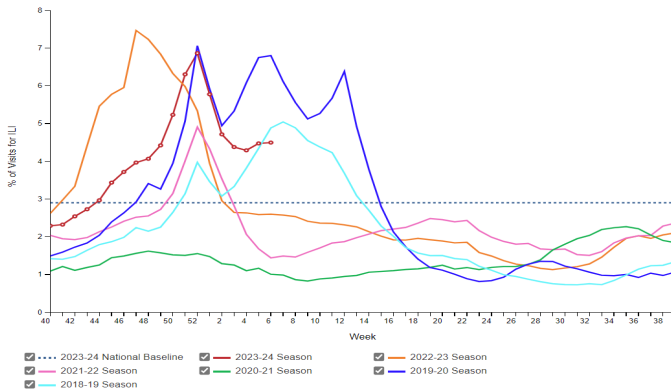
INFLUENZA-LIKE ILLNESS (ILI) ACTIVITY - UNITED STATES

Influenza Positive Tests Reported to CDC by U.S. Clinical Laboratories, National Summary, 2023-2024 Season



Nationwide in Week 6, incident ILI activity was 4.5%; this is above the national baseline of 2.9%. Additionally, a total of 89,939 specimens were tested for influenza by select clinical laboratories and submitted to the CDC; 13,304 (14.8%) were positive. Influenza A accounted for 60.7% (n=8,072) of the total positive specimens.

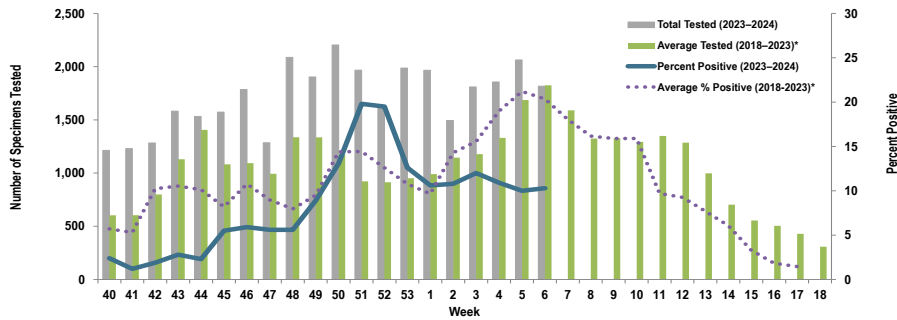
Percentage of Outpatient Visits for Respiratory Illness Reported by The U.S. Outpatient Influenza-like Illness Surveillance Network (ILI-Net), Weekly National Summary, 2023-24 Season and Selected Previous Seasons



Locations providing Week 6 laboratory data as of 21 February 2024: Camp Zama, Carlisle Barracks, Ft. Belvoir, Ft. Bliss, Ft. Campbell, Ft. Cavazos, Ft. Carson, Ft. Drum, Ft. Eisenhower, Ft. Eustis, Ft. Gregg-Adams, Ft. Huachuca, Ft. Irwin, Ft. Jackson, Ft. Johnson, Ft. Knox, Ft. Leavenworth, Ft. Leonard Wood, Ft. Lewis, Ft. Liberty, Ft. Meade, Ft. Moore, Ft. Novosel, Ft. Riley, Ft. Sam Houston, Ft. Sill, Ft. Stewart, Ft. Wainwright, Korea, Landstuhl Regional Medical Center, Redstone Arsenal, Tripler Army Medical Center, the U.S. Military Academy at West Point, and Walter Reed National Military Medical Center.

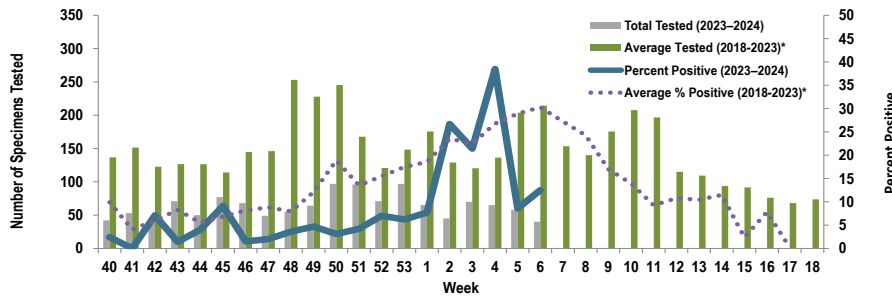
Proportion of Influenza A Positive Specimens by Week and Medical Readiness Command, 2023–2024 as Compared to 2018–2023*

Medical Readiness Command - East



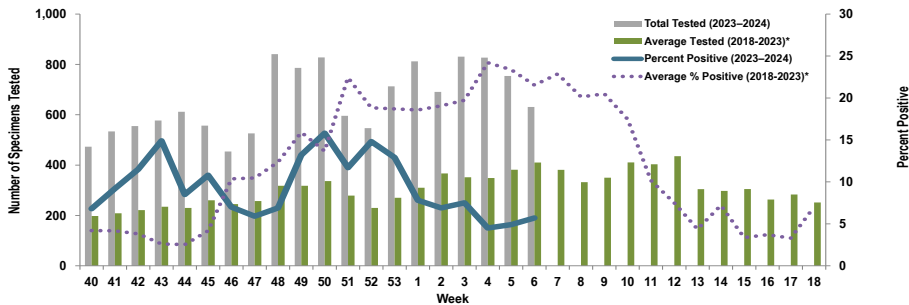
| Week 6 | | | |
|--------------|-----------|------------|--------------|
| Age Group | AD | Non-AD | Season Total |
| < 18 | 0 | 55 | 1,110 |
| 18–29 | 36 | 17 | 630 |
| 30–39 | 17 | 10 | 492 |
| 40–49 | 9 | 14 | 347 |
| 50–59 | 1 | 12 | 260 |
| 60+ | 0 | 17 | 289 |
| Total | 63 | 125 | 3,128 |

Medical Readiness Command - Europe (Landstuhl Regional Medical Center)



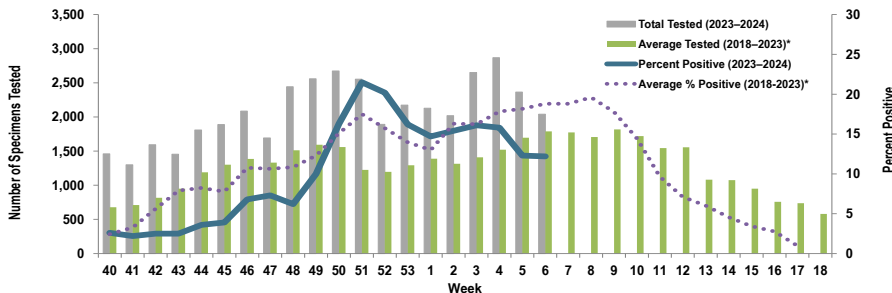
| Week 6 | | | |
|--------------|----------|----------|--------------|
| Age Group | AD | Non-AD | Season Total |
| < 18 | 0 | 1 | 39 |
| 18–29 | 1 | 0 | 21 |
| 30–39 | 1 | 0 | 17 |
| 40–49 | 0 | 0 | 16 |
| 50–59 | 0 | 1 | 8 |
| 60+ | 0 | 1 | 5 |
| Total | 2 | 3 | 106 |

Medical Readiness Command - Pacific



| Week 6 | | | |
|--------------|-----------|-----------|--------------|
| Age Group | AD | Non-AD | Season Total |
| < 18 | 0 | 8 | 332 |
| 18–29 | 10 | 1 | 411 |
| 30–39 | 2 | 1 | 237 |
| 40–49 | 3 | 2 | 97 |
| 50–59 | 0 | 4 | 51 |
| 60+ | 0 | 5 | 96 |
| Total | 15 | 21 | 1,224 |

Medical Readiness Command - West



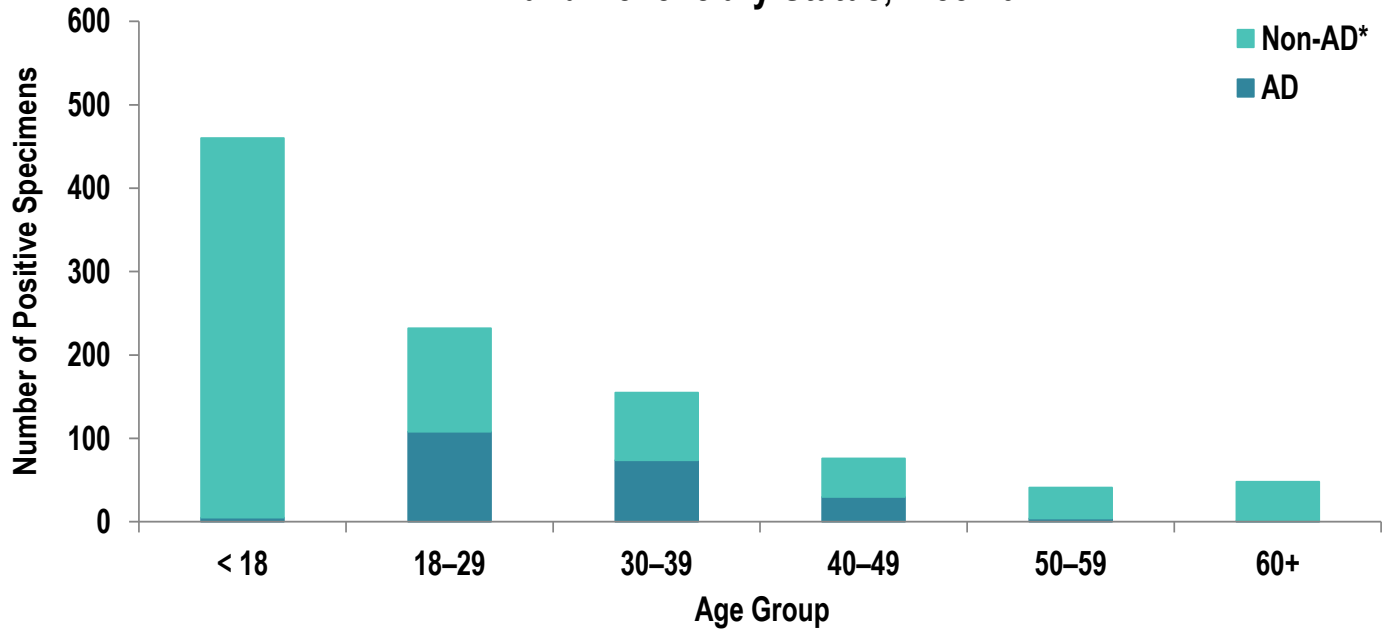
| Week 6 | | | |
|--------------|-----------|------------|--------------|
| Age Group | AD | Non-AD | Season Total |
| < 18 | 4 | 60 | 1,713 |
| 18–29 | 19 | 79 | 1,123 |
| 30–39 | 22 | 27 | 742 |
| 40–49 | 5 | 12 | 433 |
| 50–59 | 1 | 10 | 323 |
| 60+ | 1 | 10 | 380 |
| Total | 52 | 198 | 4,714 |

*2018–2019, 2019–2020, and 2022–2023 influenza seasons. Data from the 2020–2021 and 2021–2022 influenza seasons are not included in comparison calculations due to the unusually low incidence of influenza.

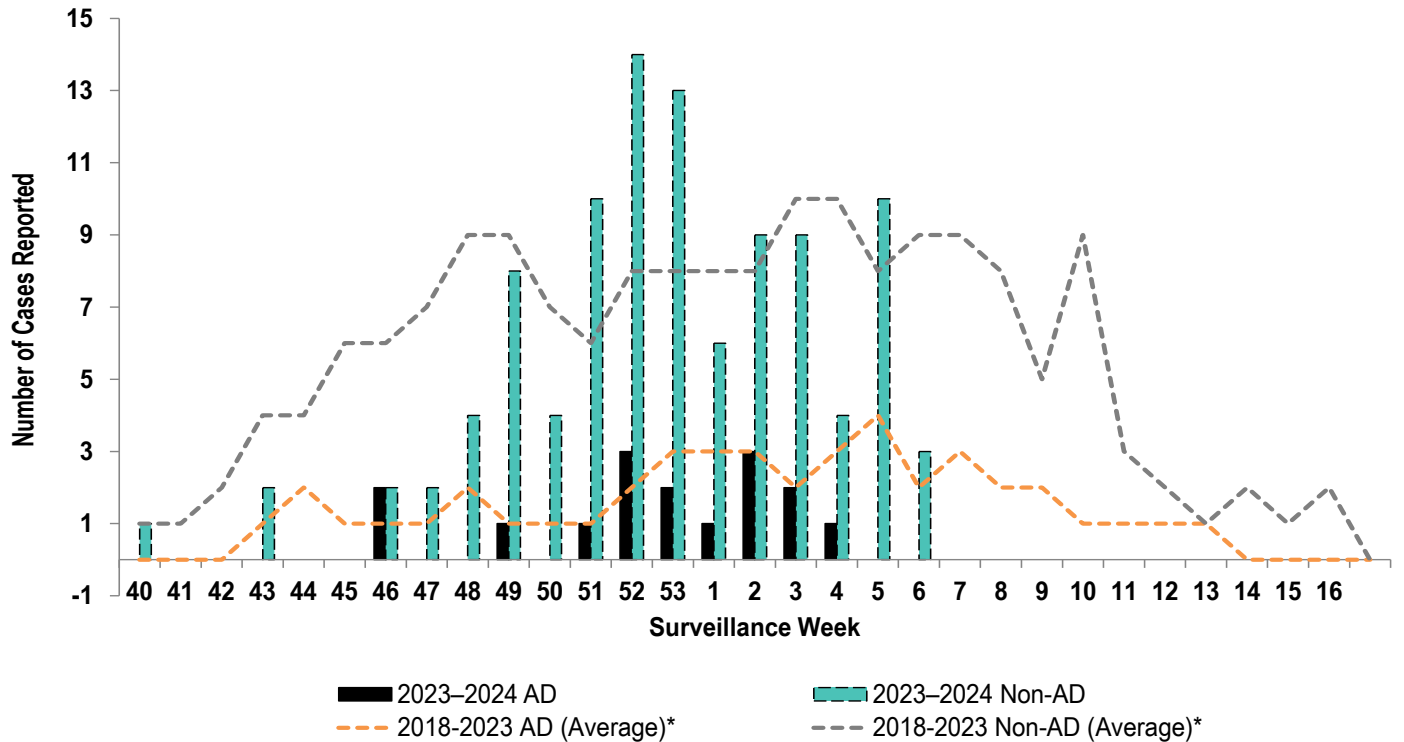
Number of Positive Influenza A Specimens by Region and Duty Status

| Region | Week 3 | | Week 4 | | Week 5 | | Week 6 | |
|-------------|--------|--------|--------|--------|--------|--------|--------|--------|
| | AD | Non-AD | AD | Non-AD | AD | Non-AD | AD | Non-AD |
| MRC-East | 76 | 141 | 77 | 125 | 69 | 138 | 63 | 125 |
| MRC-Europe | 6 | 9 | 4 | 21 | 1 | 4 | 2 | 3 |
| MRC-Pacific | 32 | 30 | 15 | 22 | 11 | 26 | 15 | 21 |
| MRC-West | 121 | 305 | 128 | 324 | 74 | 218 | 52 | 198 |

Positive Respiratory Specimen Results from Army MTFs by Age Group and Beneficiary Status, Week 6

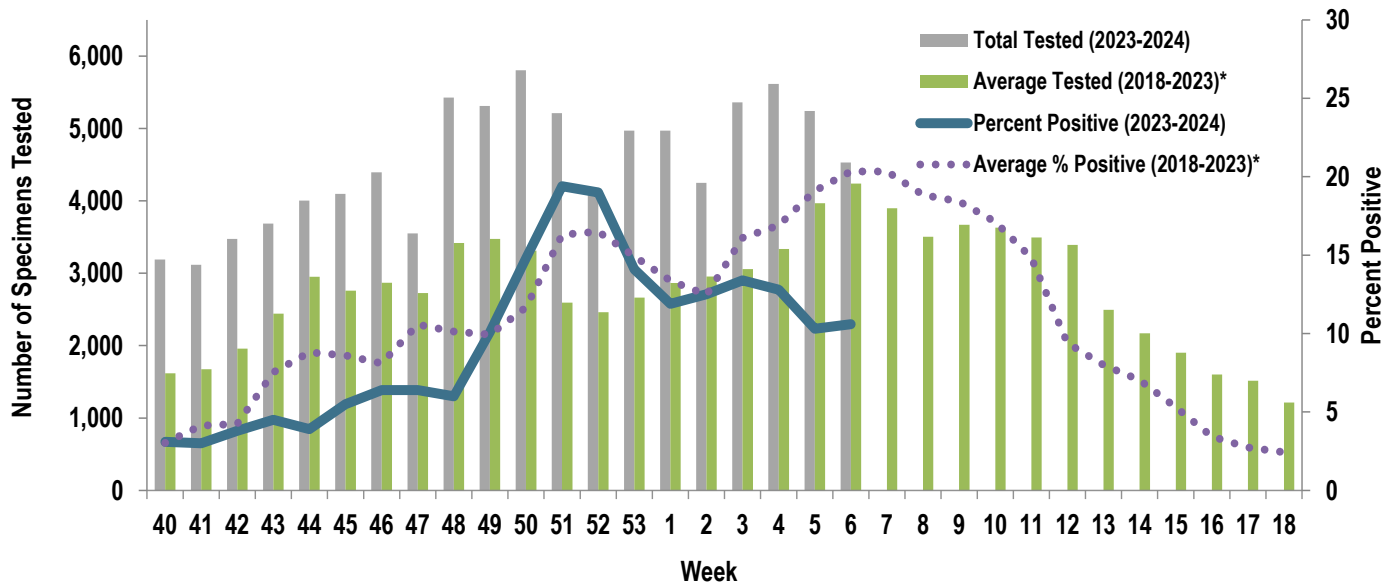


Army Influenza-Associated Hospitalizations Reported in DRSi by Onset Week



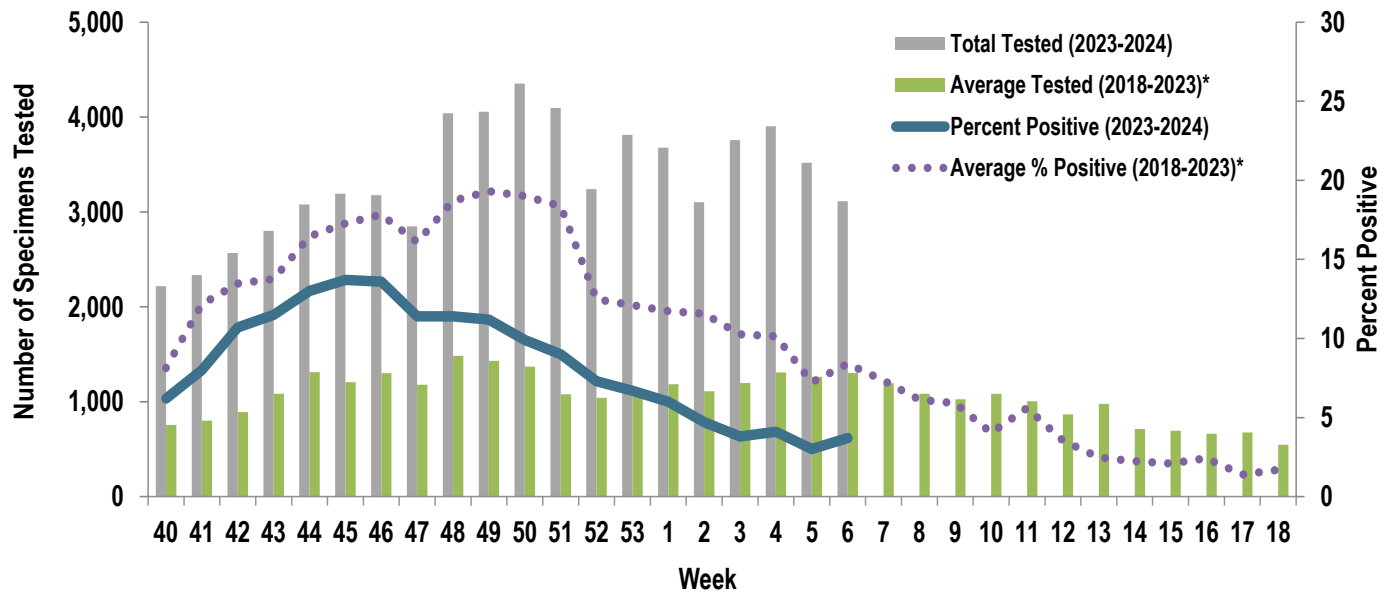
*2018-2019, 2019-2020, and 2022-2023 influenza seasons. Data from the 2020-2021 and 2021-2022 influenza seasons are not included in comparison calculations due to the unusually low incidence of influenza.

Proportion of Positive Influenza A Specimens for U.S. Army, 2023-2024



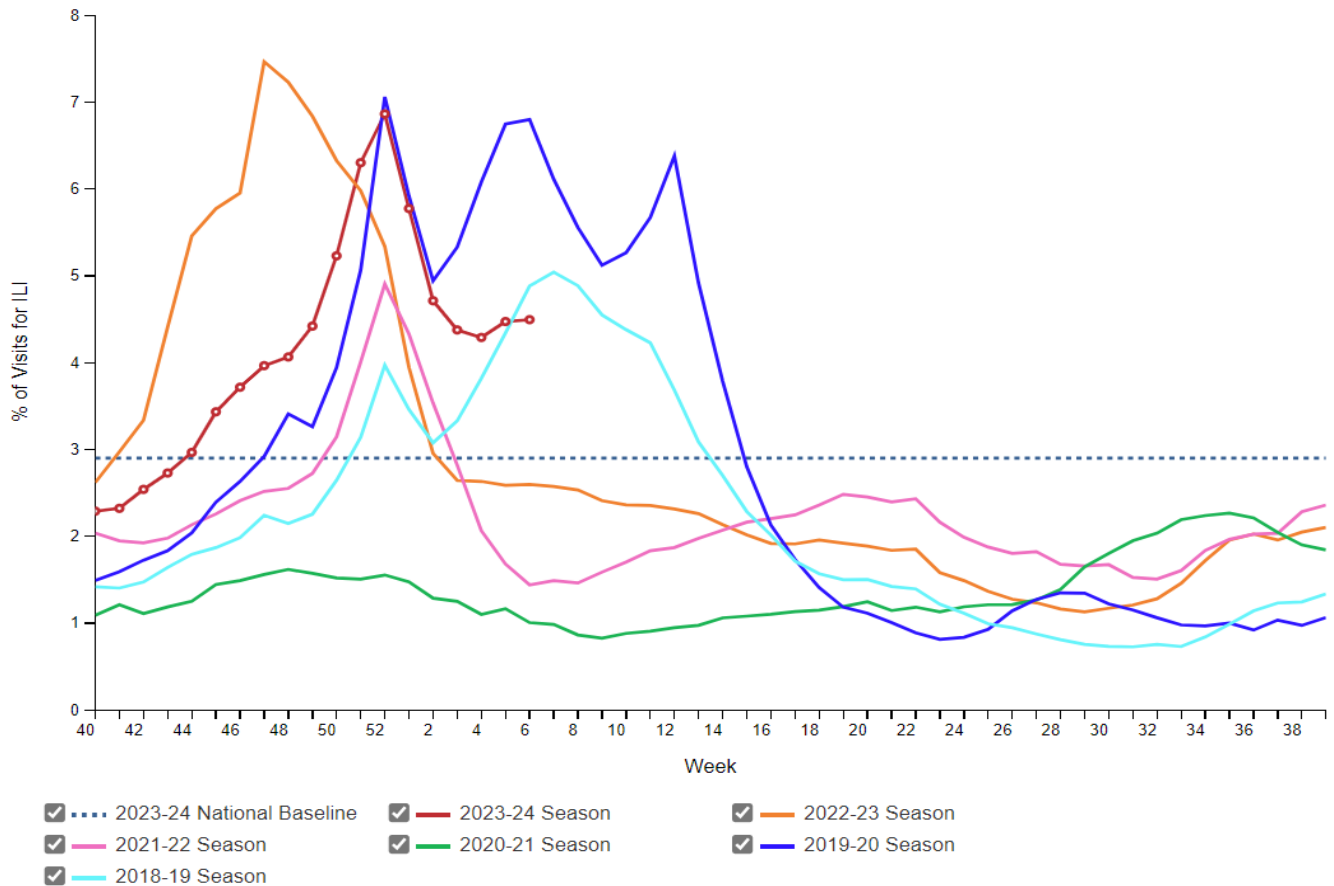
*2018–2019, 2019–2020, and 2022–2023 influenza seasons. Data from the 2020–2021 and 2021–2022 influenza seasons are not included in comparison calculations due to the unusually low incidence of influenza.

Proportion of Positive RSV Specimens for U.S. Army, 2023-2024



*2018–2019, 2019–2020, and 2022–2023 influenza seasons. Data from the 2020–2021 and 2021–2022 influenza seasons are not included in comparison calculations due to the unusually low incidence of influenza.

Percentage of Outpatient Visits for Respiratory Illness Reported by
The U.S. Outpatient Influenza-like Illness Surveillance Network (ILINet),
Weekly National Summary, 2023-24 Season and Selected Previous Seasons



Influenza Positive Tests Reported to CDC by U.S. Clinical Laboratories, National Summary, 2023-2024 Season

